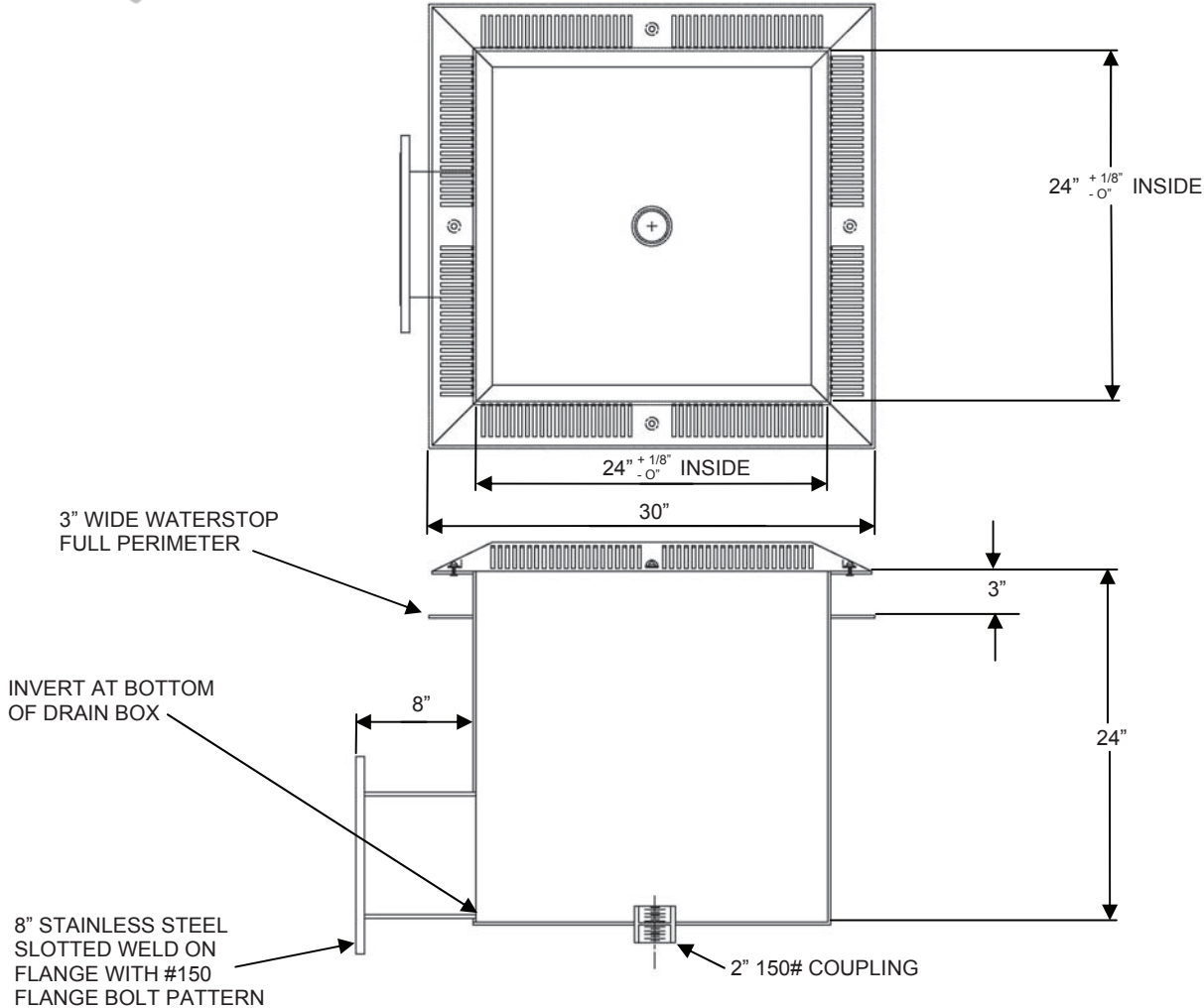


**24" x 24" x 24" STAINLESS STEEL MAIN DRAIN
8" FLANGED CONNECTION
WITH FIBERGLASS AEGIS ANTI - ENTRAPMENT SHIELD
MAX. FLOW RATE @ 1.5 F.P.S. = 600 G.P.M.
PART # 242424SSMD-AE-8**



**ASME A112.19.8a-2008 VGB-2008
WALL FLOW RATE: 1120 G.P.M.
FLOOR FLOW RATE: 1432 G.P.M.
LIFE: 15 YEARS – SUBMERGED OUTLET
AEGIS by NEPTUNE - BENSON, INC.**

- NOTE:
- ALL SUMP MATERIAL = 12ga. TYPE 304 S.S.
 - INCLUDES STAINLESS STEEL TYPE 316 HARDWARE



R-5/5/11

SECTION 13151 SWIMMING POOL CONSTRUCTION

MAIN DRAIN SUMPS - STAINLESS STEEL

- A. Main drain sumps shall be all T-304 stainless steel 12 gal. body as manufactured by Neptune-Benson, Inc. Main drains shall be 24" x 24" x 24" deep with 8" connection or 18" x 18" x 18" deep with 6" connection.
- B. Main drain sumps shall be designed in accordance with ASME A112.19.8a-2008.
- C. Main drain body shall include a 3" stainless steel waterstop flange and 2" threaded hydrostatic relief valve fitting. Hydrostatic relief valves and collector tubes shall be provided with the drains.
- D. Main drain cover shall be "AEGIS" Anti-Entrapment Shield. The shield shall be fastened to the main drain with T316 hardware, supplied.