



evoqua
WATER TECHNOLOGIES



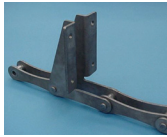
ENVIREX[®] HEAVY-DUTY CHAIN & SCRAPER SLUDGE COLLECTOR SYSTEMS

EVOQUA IS THE LEADER IN HEAVY-DUTY SLUDGE COLLECTORS

The Envirex® heavy-duty sludge collector system is designed for long-lasting performance in the toughest applications. Advanced materials and high strength components provide longer life and reduced wear to address elevated load and grit applications. Evoqua has more than 100 years of experience in clarification technologies and services with a wide range of options, material choices and sizes to meet your new construction or retrofit needs.

1 Heavy-Duty Carrier Chains

Envirex ENV715 Chain: Provides excellent strength and corrosion resistance with Series 400 stainless steel with hardened pins and bushings. Suitable for applications with elevated grit levels or sludge loads where a stronger, more robust chain is required. Especially suited for plants using stacked (double deck) collectors where the collectors can't be visually inspected or easily accessed.



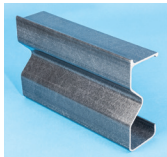
Envirex HS730 Chain: Constructed out of high-strength composite materials, Loop Chain is suited for collectors that are heavily loaded. It is the only nonmetallic collector chain that offers strength nearly equal to cast and stainless steel chain at a fraction of the weight. Stainless steel flight attachments and rollers are available for extreme conditions.



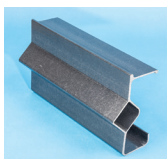
2 Heavy-Duty Fiberglass Scraper Flights

Envirex scraper flights are pultruded out of fiberglass for consistent shape, quality and performance. The fiberglass is totally encapsulated in a water resistant resin to prevent wicking, ensuring the flights remain strong and stiff. Available in 3 inch by 6 inch and 3 inch by 8 inch to match existing mounting hole patterns.

Sigma Plus Flights: The transverse concave indentation provides 60% greater structural support compared to channel flights. It can also be installed in collectors up to 25 feet (7.6 m) wide.

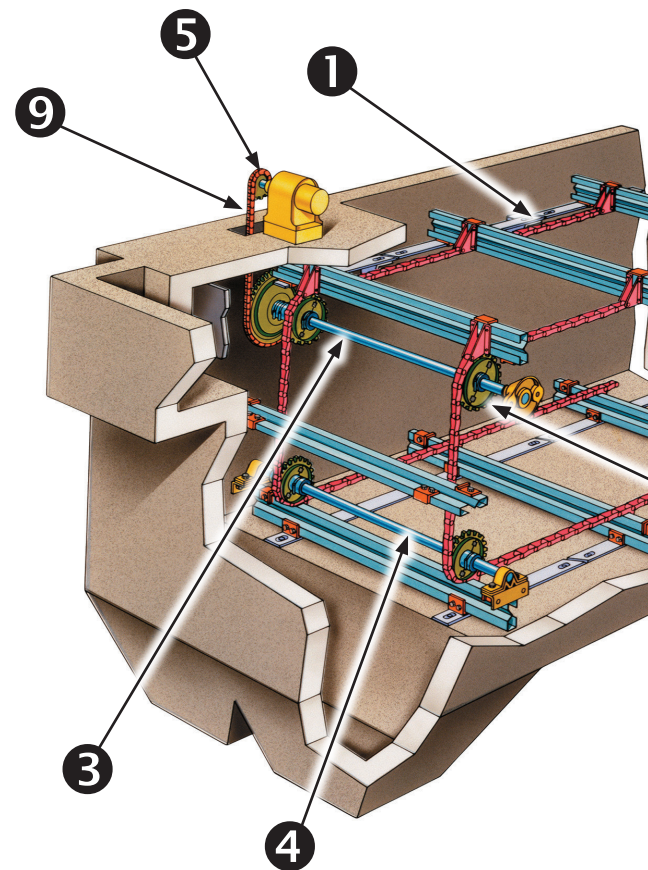


Diamond Flights: This high strength flight can handle heavy sludge loads or be used in tanks up to 32 feet (10 m) in width. This special design gives it exceptional resistance to deflection and twist.



3 Shafting - Head

Metallic: Solid construction up to 25 ft (7.6 m) or torque tube up to 30 ft (10 m), keyed to suit. Available in carbon or stainless steel.



4 Shafting - Corners

Full width: Solid construction for use in either live (in bearings) or static (fixed, not rotating) applications. Available in carbon or stainless steel.



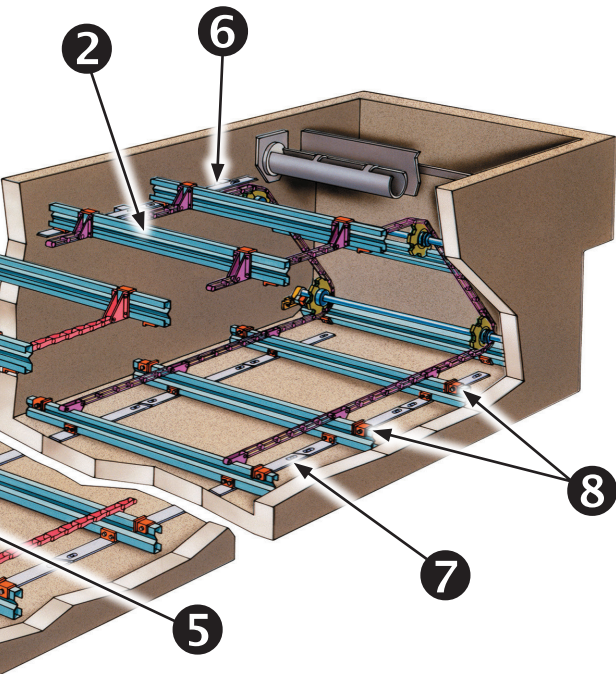
Stub shaft: Cast iron tripod with extendable metallic stub end to accommodate tank wall irregularities. Fabricated heavy-duty stainless steel for extreme duty.



5 Collector Sprockets

Stainless Steel: Bolt on segmental rim split sprockets with chain saver rim for extreme service conditions.

Non-metallic: Split construction for easy installation integrally molded hubs, tooth profile and chain saver rim for optimum integrity and strength.



Driver: Non-metallic teeth on a 316SS hub with torque overload protection.

Driven: Non-metallic or metallic, both with split construction for easy installation. Dished to accommodate wall bearings and to avoid contact with flights. Replaceable or integral teeth are available.

Materials: Teeth in polyurethane, cast nylon, or UHMW. Dished or flat bodies available in polyurethane, cast nylon, cast iron, or fabricated steels.

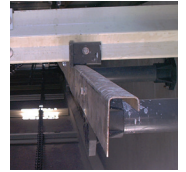


6 Return Tracks

Angles: Wall mounted supports with replaceable UHMW PE wear strip for low friction and extended service life for flight wear shoes and support rails. Non-metallic wall brackets are adjustable in the field to ensure proper flight tracking along the collector basin. Available in fiberglass, carbon or stainless steel.



J-Track: Named for the unique shape of the main stainless steel structural member, this special configuration eliminates twisting and bowing for track lengths up to 20 ft (3 m). The UHMW wear strip is not needed.



7 Wearing Strips

Floor: The Envirex® wear strip system is attached directly to the tank floor to conform to rough concrete surfaces and uneven expansion joints. Manufactured out of UHMW PE or stainless steel for low friction.

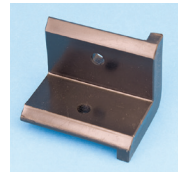


C-Rail: The floor-mounted version of the wear strip. T-shaped cleats accommodate the special wear strip, maximizing the effective wear shoe.



8 Wearing Shoes

UMHW, polyurethane, or hardened steel wear shoes mounted to the flights to minimize wear and friction.



9 Drive Chain

Envirex ENV78 chain constructed with Series 400 stainless steel with hardened pins and bushings and 316 SS cotter pins. This chain is suitable for applications with elevated grit levels or sludge loads where a stronger, more robust chain is required.





We offer complete installation and after-sales services to help you protect your investment.

- Our experienced field service personnel—the largest group in the industry—can handle a complete upgrade, or do portions of it assisted by your personnel.
- We can handle the installation of new collectors, as well, working with your contractors or others. They can perform annual inspections, advise on inventory requirements and, of course, be on-site for emergencies.
- We can upgrade or retrofit any manufacturer's sludge collector with new, non-metallic components. The renovated collector will run smoother and require far less maintenance than the original.
- For replacement parts, we have the most extensive inventory in the business, and can ship from stock immediately when required.

Envirex[®]
an EVOQUA brand



2607 N. Grandview Blvd, Suite 130, Waukesha, Wisconsin 53188

+1 (866) 926-8420 (toll-free) +1 (978) 614-7233 (toll)

www.evoqua.com

Envirex is a trademark of Evoqua, its subsidiaries or affiliates, in some countries.

All information presented herein is believed reliable and in accordance with accepted engineering practices. Evoqua makes no warranties as to the completeness of this information. Users are responsible for evaluating individual product suitability for specific applications. Evoqua assumes no liability whatsoever for any special, indirect or consequential damages arising from the sale, resale or misuse of its products.

© 2017 Evoqua Water Technologies LLC

Subject to change without notice

MU-HD-CS-BR-0917