

Arch-rib fixed covers are the most economical cover type

ARCH-RIB COVER

Evoqua has provided customers with a robust and proven truss style steel digester cover for over 50 years. Now in addition to offering this well-known cover, Evoqua has developed a radial beam shell type steel digester cover in a fixed configuration for applications where sludge level variation is minimal.

ARCH-RIB COVER DESIGN

The arch-rib cover consists of a center gas dome with integral compression ring, radial beams, cover plates, rim skirt assembly with integral thrust ring, hold-down brackets and accessories. The cover is supported on the top of the tank wall. The outer thrust ring is designed such that no excessive loading is transferred to the tank wall.

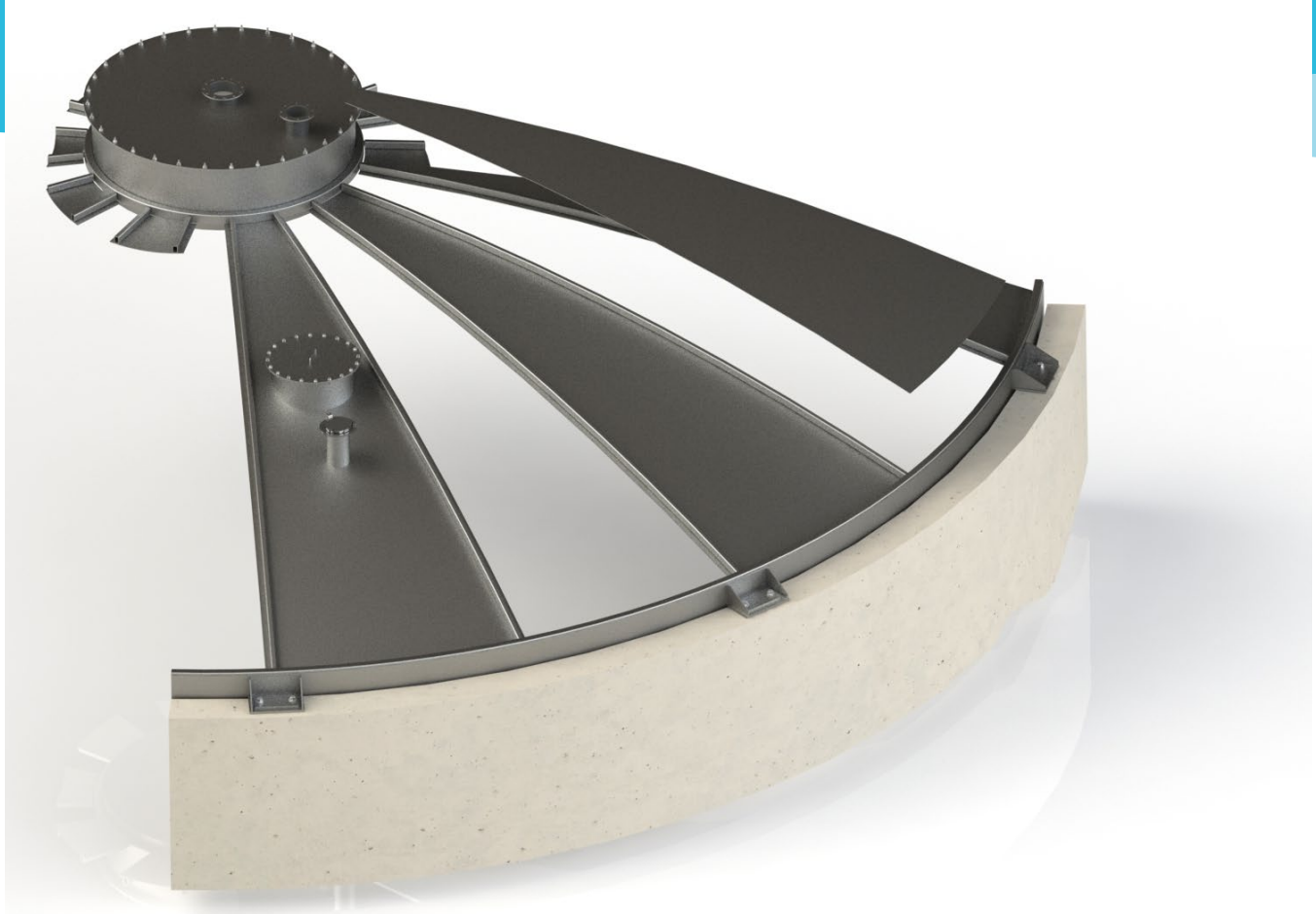
Evoqua arch-rib covers are custom designed based on customer specified loading. The steel weight of the cover is optimized using finite element analysis (FEA) to ensure the most efficient use of materials. This reduces shipping costs and provides ease of handling for on-site field-erection.

FIELD EXECUTION ADVANTAGES

- Approximately 50 percent less field weld length than truss style cover
- Cover is shipped as factory welded sub-assemblies
 - Alternating "pie" sections installed in place with rim skirt sections and center gas dome
 - Intermediate roof plates placed between the rim skirt sections and welded to form a sealed shell
 - Each sub-assembly includes two beams and one cover plate
- Easy application of spray insulation on top of the cover

FIXED COVER ADVANTAGES

- Most economical cover type
- No moving parts
- Sealed annular space eliminates odors



EVOQUA SERVICES

Evoqua offers on-site inspection services and can replace any existing digester cover. Our technical experts can assist you in selecting the best solution for your application. Evoqua also provides custom design, manufacturing and installation services to meet your needs.

FOR MORE INFORMATION

www.evoqua.com/retrofit



2607 N. Grandview Blvd., Suite 130, Waukesha, WI 53188

+1 (800) 524-6324 (toll-free) +1 (262) 547-0141 (toll) www.evoqua.com

All information presented herein is believed reliable and in accordance with accepted engineering practices. Evoqua makes no warranties as to the completeness of this information. Users are responsible for evaluating individual product suitability for specific applications. Evoqua assumes no liability whatsoever for any special, indirect or consequential damages arising from the sale, resale or misuse of its products.

© 2016 Evoqua Water Technologies LLC Subject to change without notice MU-ARCH-RIB-DS-0816