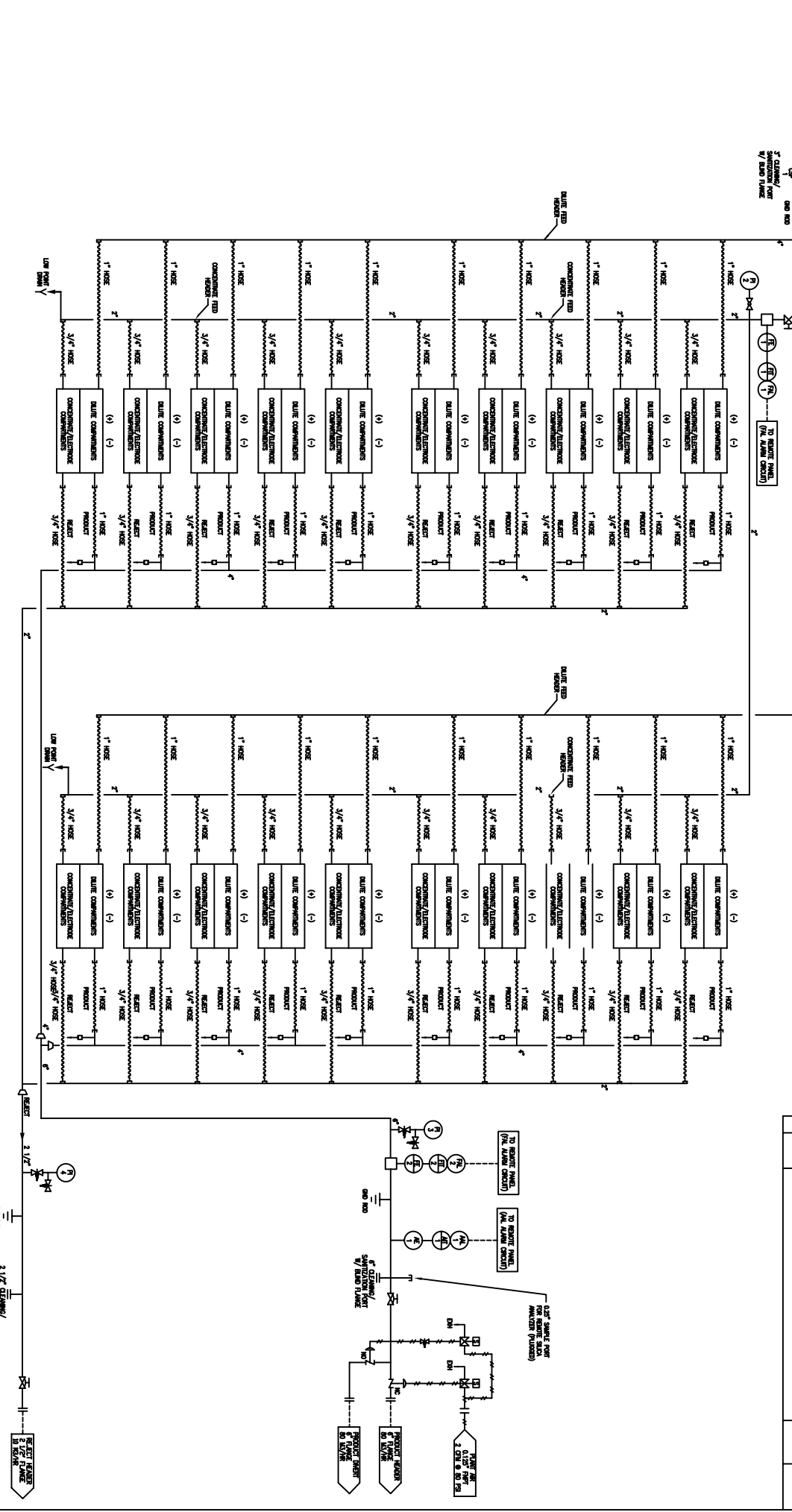


REV	DATE	DESCRIPTION	BY	CHK



- NOTES:**
1. DENOTES LINES BY CUSTOMER/OWNERS
 2. ALL PROCESS PLUMBING, UNLESS OTHERWISE NOTED, TO BE PVC
 3. LOW POINT DRAIN, 0.2" FNPT (PLUGGED)
 4. PRODUCT DRAIN NORMALLY CLOSED AND PRODUCT VALVE OPEN
 5. DENOTES THROTTLE DEVICES AND PRODUCT VALVE OPEN
 6. DENOTES AIR LINE

UNLESS OTHERWISE SPECIFIED
 ALL DIMENSIONS ARE IN INCHES UNLESS
 OTHERWISE NOTED
 ANGLES 45°
 SURFACE FINISHNESS 68
 30 MFT SCALE POINT

REVISION	DATE	DESCRIPTION

DESIGNER	DATE	TIME	TITLE
JY	1/6/05		PROCESS AND INSTRUMENT DIAGRAM
			LARGE CEDI SYSTEM

IONPURE
 IONPURE, LOWELL, MA
 (978) 534-5349

PROJECT: SURFACE TREATMENT SHEET: 1 OF 1