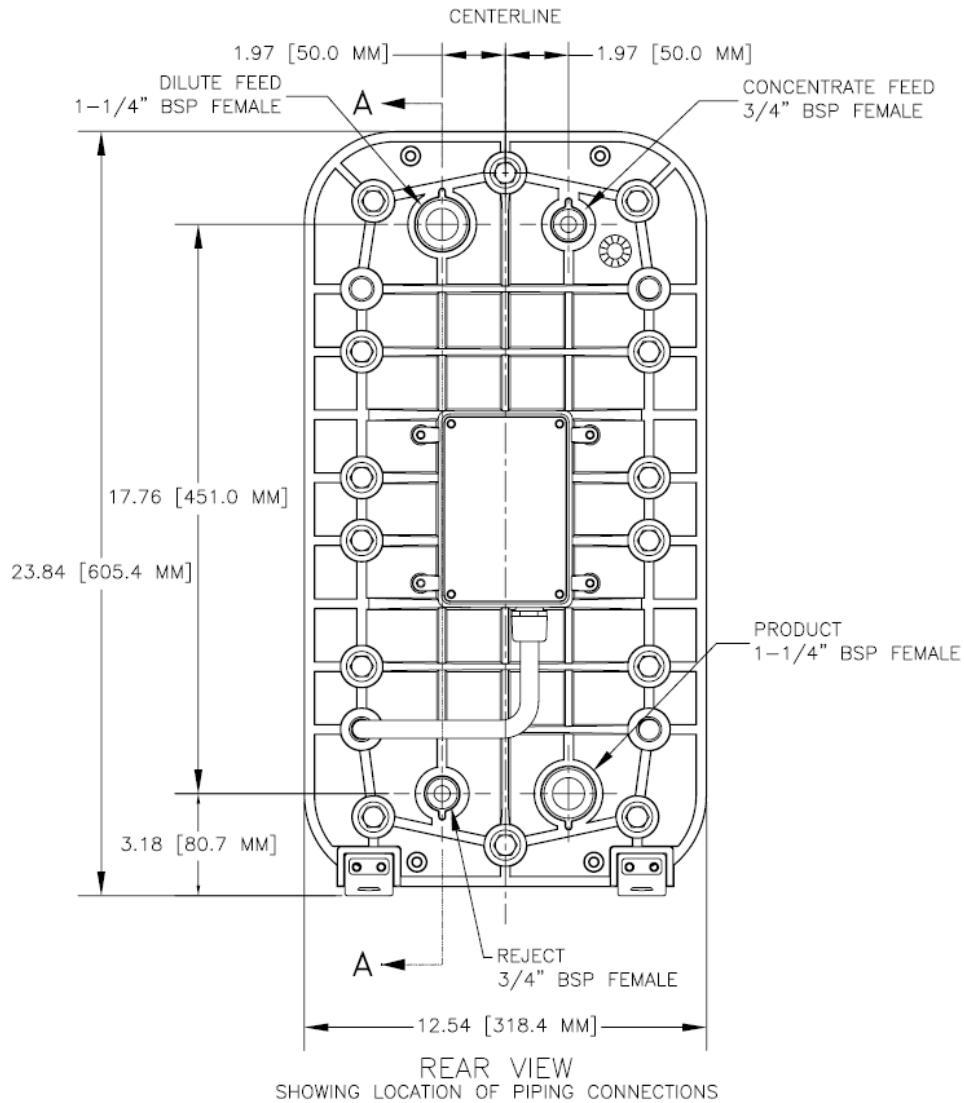


# CEDI Module

## LX-H and LX-HI Hot Water Sanitizable Plumbing Connections

Ionpure hot water sanitizable LX-HI modules have a polypropylene endblock with **FEMALE** piping connections. There are four (4) connection points:

- Dilute Feed (1-1/4" FEMALE BSPP)
- Product (1-1/4" FEMALE BSPP)
- Concentrate Feed (3/4" FEMALE BSPP)
- Reject (3/4" FEMALE BSPP)



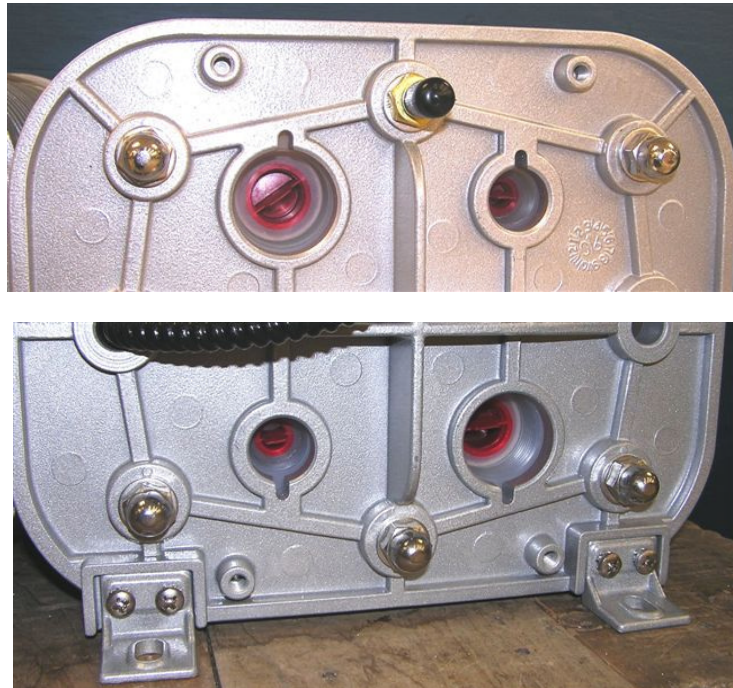
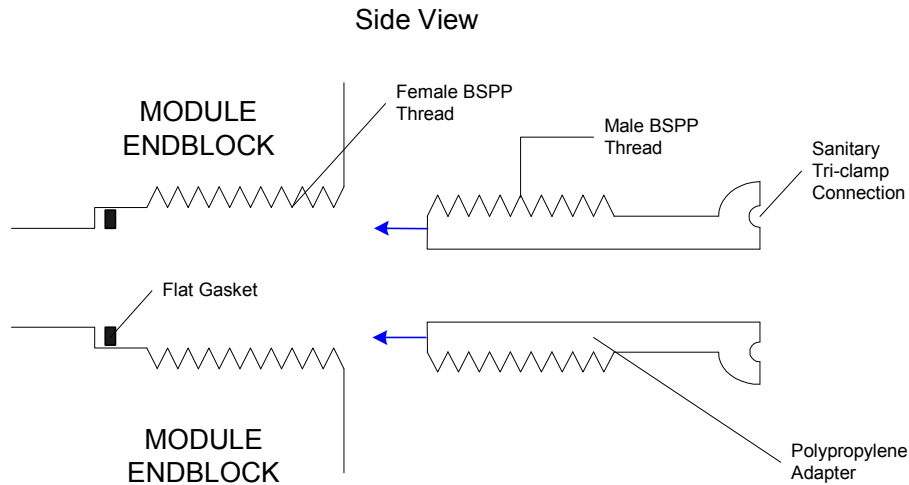
These connections are British Standard Pipe Parallel (BSPP) thread which is NOT the same as National Pipe Thread (NPT)!!!! For more information on BSP thread, visit

<http://www.britishfasteners.com/threads/bsp.html>

# CEDI Module

## LX-H and LX-HI Hot Water Sanitizable Plumbing Connections

Proper plumbing connections to this type of module REQUIRES THE USE OF FLAT GASKETS and suitable piping adapters as shown in the drawing below:



There are several important points regarding the piping connections:

**Sealing Mechanism** - The seal is created by compressing a gasket between the flat surface of the module endblock and the piping adapter (see blue arrows). The female threads in the endblock are parallel threads. They are NOT TAPERED pipe threads and DO NOT CREATE the seal, they simply allow the sealing surfaces to move towards each other.

## CEDI Module

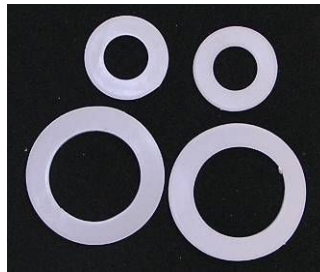
### LX-H and LX-HI Hot Water Sanitizable Plumbing Connections

**Use of Sealants** - DO NOT use Teflon® tape or any other pipe sealant (ex. Dope) in the threads since they will result in preventing a good seal.

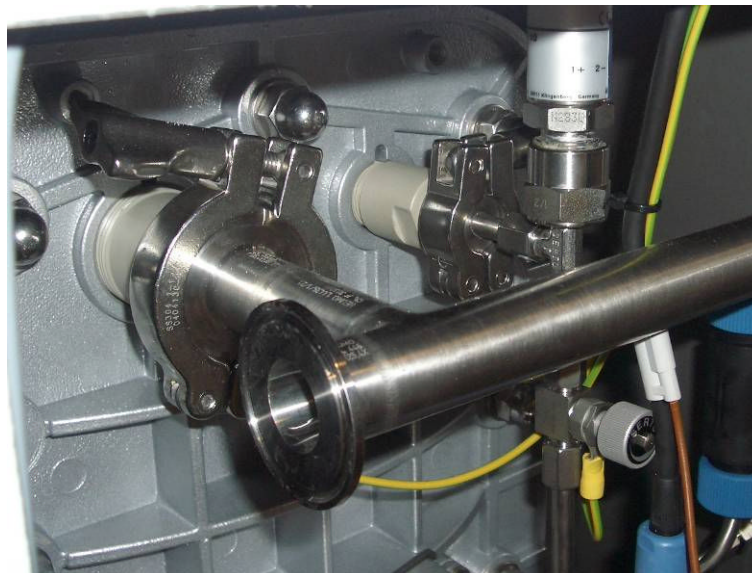


The seal is designed to be sanitary by simulating the inside of a smooth pipe. This is done by using the same internal diameter for the piping adapter, the flat gasket, and the endblock throughout the connection.

**Gaskets** - A set of four gaskets (two dilute inlet/product outlet and two for concentrate inlet/reject) are included with every module. The Ionpure Part # is AS0096 (Order # W3T17232).



**Piping Adapter Material** - To avoid corrosion, the piping adapters must be non-metallic. Polypropylene and PVDF has been shown to be suitable for hot water sanitization at 80 °C. PVC is NOT rated for hot water sanitization!



# CEDI Module

## LX-H and LX-HI Hot Water Sanitizable Plumbing Connections

Metallic piping can be connected to the non-metallic adapters. However, the use of metal piping always carries some risk of corrosion, which could lead to module fouling.

**Tightening** - Adapters should be tightened by hand and NOT using a wrench!

**WARNING!** Overtightening can result in damage to the module that can only be fixed in the factory!



**Sanitary Adapters** - Fabrication drawings are available in the Design Center section of [www.ionpure.com](http://www.ionpure.com) or they can be ordered from Ionpure.

Dilute Inlet / Product Adapter:

Ionpure Part # LBEP137 (Order # W2T211322)

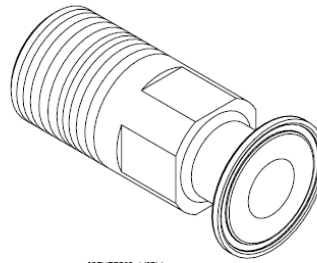
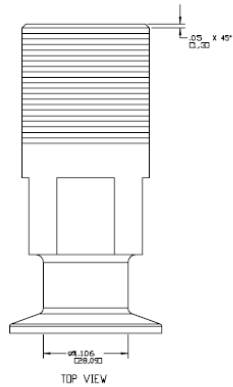
Concentrate Inlet / Reject Adapter:

Ionpure Part # LBEP136 (Order # W2T211321)

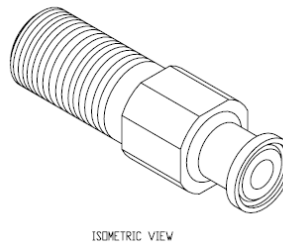
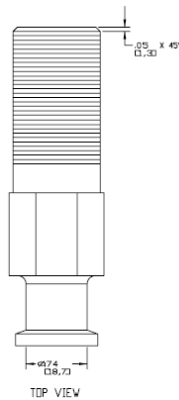
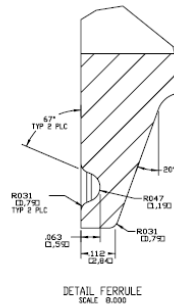
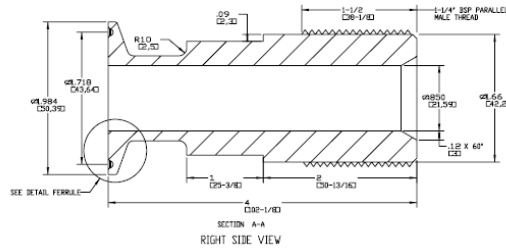
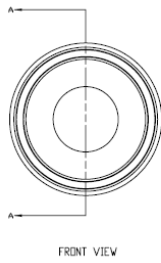


# CEDI Module

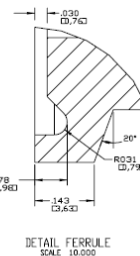
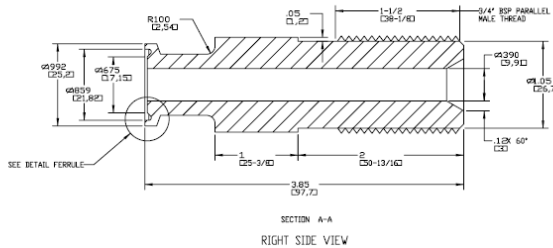
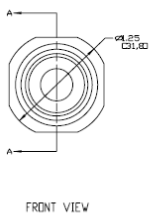
## LX-H and LX-HI Hot Water Sanitizable Plumbing Connections



- NOTES:
1. MATERIAL: POLYPROPYLENE
  2. PRIMARY DIMENSIONS ARE IN INCHES. SECONDARY DIMENSIONS ARE IN MM.
  3. DISREGARD FRACTIONS SHOWN IN METRIC DIMENSIONS.



- NOTES:
1. MATERIAL: POLYPROPYLENE
  2. PRIMARY DIMENSIONS ARE IN INCHES. SECONDARY DIMENSIONS ARE IN MM.
  3. DISREGARD FRACTIONS SHOWN IN METRIC DIMENSIONS.



**IONPURE® CEDI Modules**  
**For more information about IONPURE Modules, call the local Ionpure center:**  
 North America: 866-876-3340  
 Europe: (+44) 190-851-1307  
 Pacific (ex. China): +886-930-432-111  
 China: (+86) 21-58824988-2561  
<http://www.ionpure.com>

IONPURE is a registered trademark of Siemens. Siemens reserves the right to change the specifications referred to in this literature at any time, without prior notice.