
PERMIT ATTACHMENT

APPENDIX II

TOPOGRAPHIC MAP

FLOOD INSURANCE MAP FOR THE COLORADO
RIVER INDIAN RESERVATION

PERIPHERAL LAND USE STUDY DIAGRAM FOR
THE COLORADO RIVER INDIAN TRIBE LANDS

WIND ROSE
LEGAL BOUNDARIES

This document was not altered from the April 2016 Application.

September 2018

APPENDIX II

TOPOGRAPHIC MAP

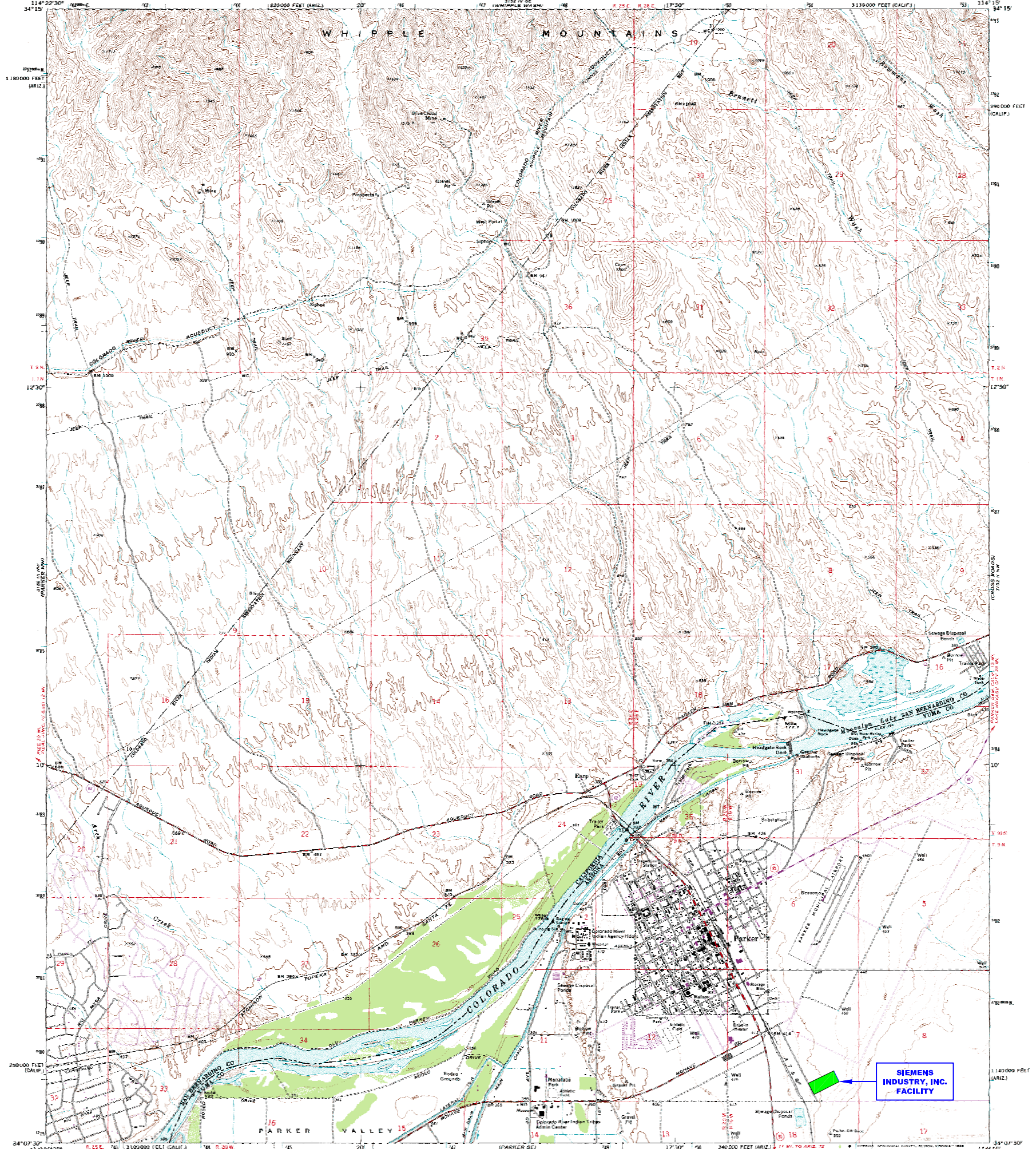
FLOOD INSURANCE MAP FOR THE COLORADO
RIVER INDIAN RESERVATION

PERIPHERAL LAND USE STUDY DIAGRAM FOR THE
COLORADO RIVER INDIAN TRIBE LANDS

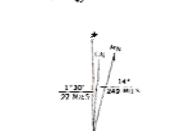
WIND ROSE

LEGAL BOUNDARIES

Revision 1
April 2012



Mapped, edited, and published by the Geological Survey
Control by NAD 83 and NAD 83
Topography by photogrammetric methods from aerial
photographs taken 1969. Field checked 1970
Polyconic projection. 1927 North American datum
10,000-foot grid based on California coordinate system, zone 5,
and Arizona coordinate system, west zone
1000-meter Universal Transverse Mercator grid ticks,
zone 11, shown in blue
To place on the predicted North American Datum 1983
move the projection lines 12 meters east
as shown by dashed corner ticks
Where omitted, land lines have not been established



CONTINUOUS INTERVAL 40 FEET
DOTTED LINES REPRESENT 10-FOOT CONTOURS
NATIONAL GEODETIC VERTICAL DATUM OF 1929

ROAD CLASSIFICATION
Primary highway, light surface
Secondary highway, hard surface
Light-duty road, hard or improved surface
Unimproved road
Interstate Route
U.S. Route
State Route

PARKER, ARIZ.—CALIF.
7.5 MINUTE QUADRANGLE
34114 H3-11-1224
1970
PHOTOREVISED 1975
DMA 5128 IN 83-UNIMPROV. ROAD

NOTES:

1. SEE ATTACHED SIEMENS INDUSTRY, INC. DRAWING D-14789-02 FOR DETAILED LOCATION OF S01, S02, AND X03.
2. THERE ARE NO INJECTION WELLS ASSOCIATED WITH THIS FACILITY.
3. THERE ARE NO SPRINGS, DRINKING WATER WELLS, NOR SURFACE WATER BODIES LOCATED WITHIN 1/4 MILE OF THIS FACILITY.

REV.	DATE	REVISION DESCRIPTION	DRAWN	CHK'D	ENG'R
1	3/15/12	NAME CHANGED TO SIEMENS INDUSTRY, INC.	JBE	KEM	

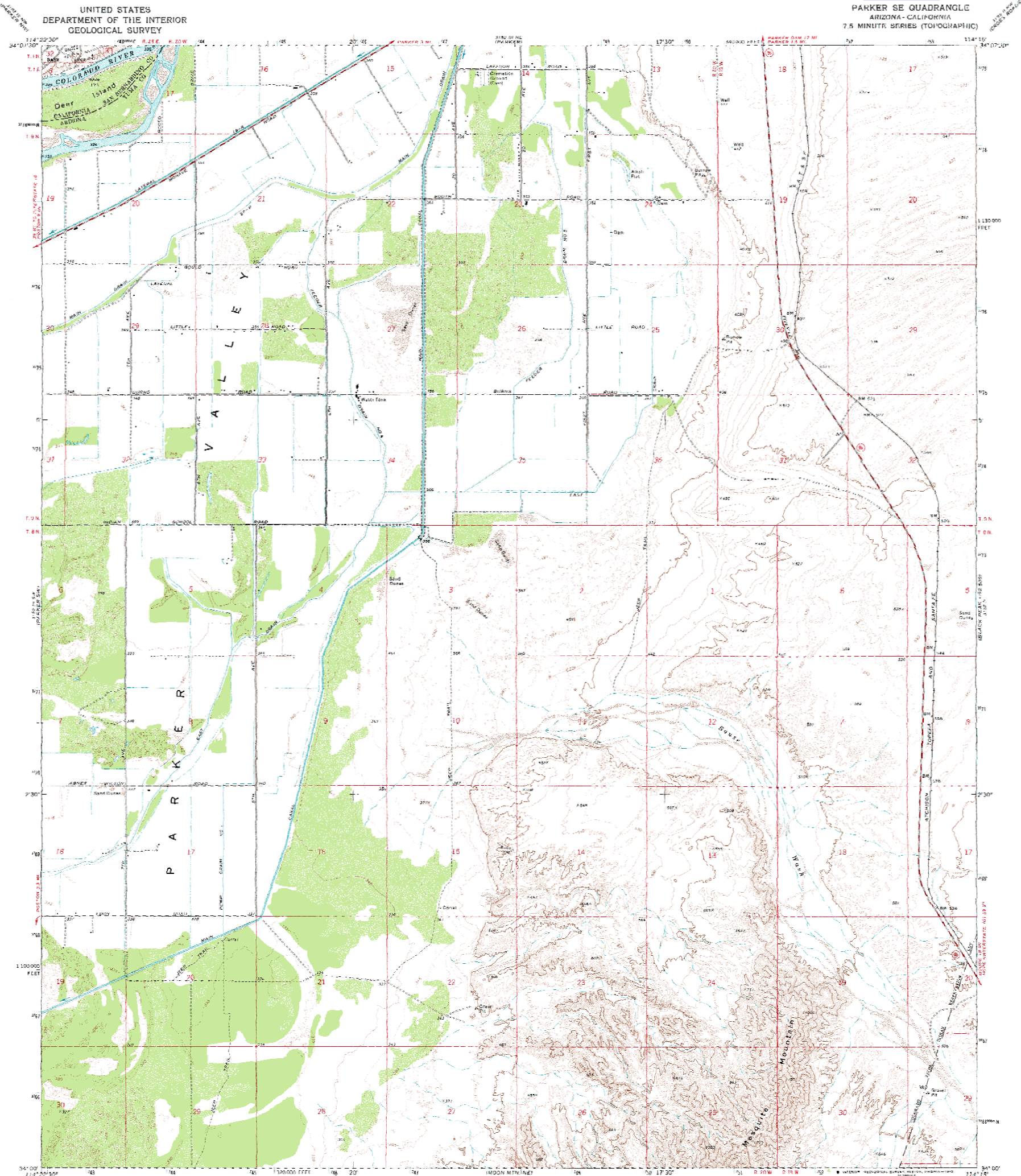
THIS DRAWING IS THE PROPERTY OF SIEMENS AND CANNOT BE REPRODUCED OR DELIVERED TO OTHERS WITHOUT THE EXPRESS WRITTEN PERMISSION OF SIEMENS INDUSTRY, INC.

CUSTOMER:
SIEMENS INDUSTRY, INC.
LOCATION:
2523 MUTAHAR ST. PARKER, AZ 85344
PROJECT No.
DRAWN: JBE 1/22/07
CHK'D: KEM 1/22/07
ENG'R:

SIEMENS INDUSTRY, INC.
Parker, AZ
TITLE:
U.S.G.S. SURVEY - PARKER, AZ TOPOGRAPHIC MAP
DWG No. **C-100604** SHEET No. **1 of 2** REV. **1**

**SIEMENS
INDUSTRY, INC.
FACILITY**

**PARKER SE QUADRANGLE
ARIZONA - CALIFORNIA
7.5 MINUTE SERIES (TOPOGRAPHIC)**



Mapred, edited, and published by the Geological Survey
Control by USGS and USC&GS
Topography by photogrammetric methods from aerial
photographs taken 1969. Field checked 1970
Polyconic projection. 1927 North American datum
100,000-foot grid based on Airy's spheroid system, west zone
1000 meter Universal Transverse Mercator grid ticks,
zone 11, shown in blue
To place on the projected North American Datum 1983,
convert this projection (zone 11) north-south and
72 meters east as shown by dashed corner ticks

115M GRID AND GRID MAGNETIC NORTH
DECLINATION AT CENTER OF SHEET

SCALE 1:24,000
1 INCH = 2000 FEET
1 KILOMETER = 0.6214 MILES

CONTOUR INTERVAL 20 FEET
DOTTED LINES REPRESENT 5 FOOT CONTOURS
NATIONAL GEODESIC VERTICAL DATUM OF 1988

ROAD CLASSIFICATION
Primary highway: light duty road, hard or
hard surface; improved surface
Secondary highway: unimproved road
hard surface
Interstate Route: U.S. Route: State Route

PARKER SE, ARIZ. - CALIF.
82480 - 1014157.5
1970
DMA 3100 10 SE - Ruled 10888

- NOTES:**
- SEE ATTACHED SIEMENS WATER TECHNOLOGIES CORP. DRAWING D-14789-02 FOR DETAILED LOCATION OF S01, S02, AND X03.
 - THERE ARE NO INJECTION WELLS ASSOCIATED WITH THIS FACILITY.
 - THERE ARE NO SPRINGS, DRINKING WATER WELLS, NOR SURFACE WATER BODIES LOCATED WITHIN 1/4 MILE OF THIS FACILITY.

REV.	DATE	REVISION DESCRIPTION	DRAWN	CHK'D	ENG'R
1	3/15/12	NAME CHANGED TO SIEMENS INDUSTRY, INC.	JBE	KEM	

CUSTOMER: SIEMENS INDUSTRY, INC.	SIEMENS INDUSTRY, INC. Parker, AZ		
LOCATION: 2523 MUTAHAR ST. PARKER, AZ 85344			
PLOT SCALE: AS NOTED DO NOT SCALE DRAWING	TITLE: U.S.G.S. SURVEY - PARKER SE, AZ TOPOGRAPHIC MAP		
PROJECT No.:			
DRAWN: JBE 1/22/07 CHK'D: KEM 1/22/07 ENG'R:			
DWG No. C-100604		SHEET No. 2 of 2	REV. 1

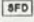
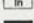
Peripheral Land Use Study: Colorado River Indian Tribes Lands

Peripheral Land Use Study

Colorado River Indian Tribes' Lands

Town of Parker, Arizona

Preliminary Land Use Concept Plan

-  Single Family Detached
-  Single Family Attached
-  Multi-Family
-  Mobile Home Park
-  Commercial
-  Office
-  Industrial
-  Park
-  Governmental/ Institutional
-  Agricultural

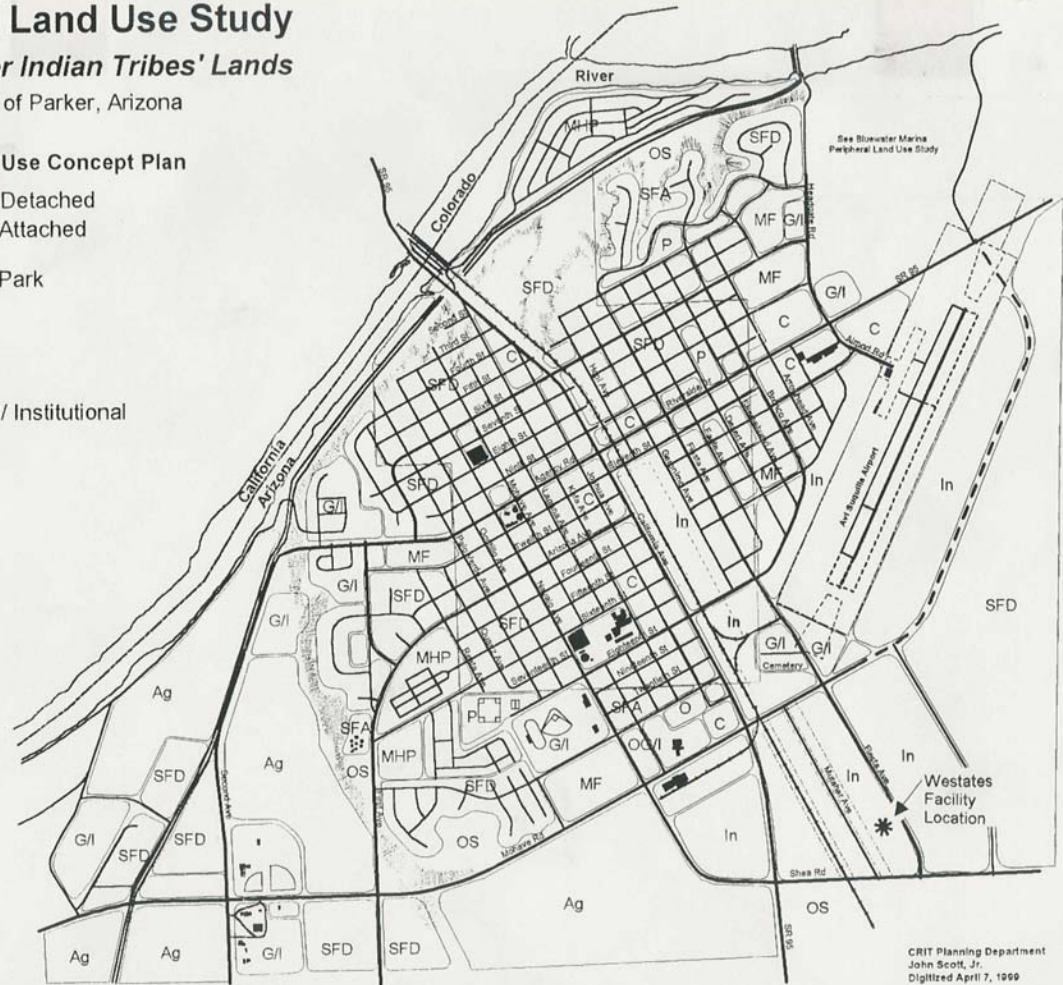
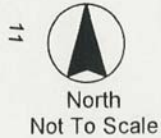
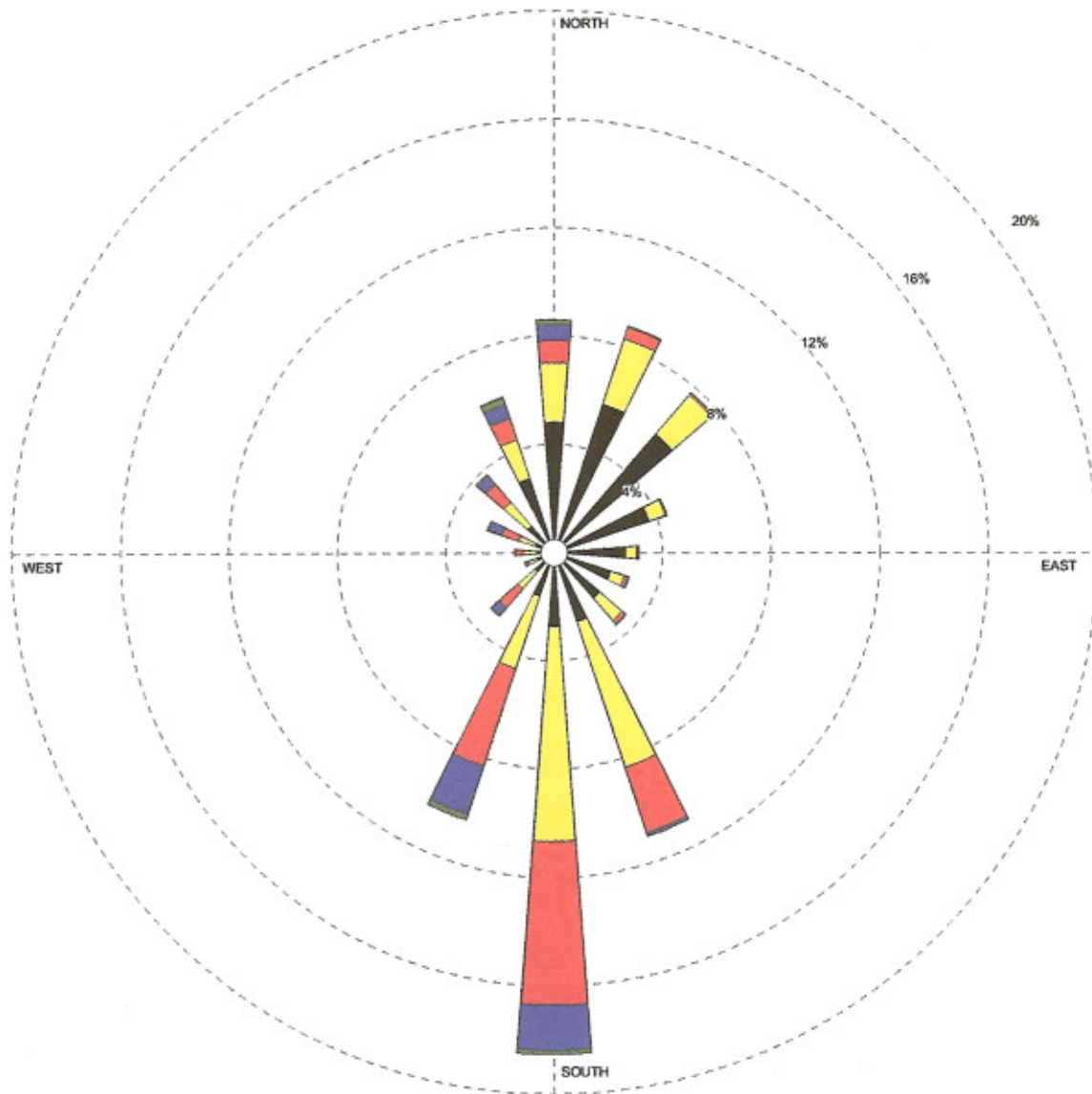


FIGURE 2. Windrose for Parker, Arizona 1997 - 2001



Wind Speed (m/s)



MODELER

CHV

COMPANY NAME

Focus Environmental, Inc.

DISPLAY

Wind Speed

UNIT

m/s

SOURCE

Arizona Meteorological Network
(AZMET) - Parker, Arizona

AVG. WIND SPEED

2.64 m/s

CALM WINDS

2.01%

ORIENTATION

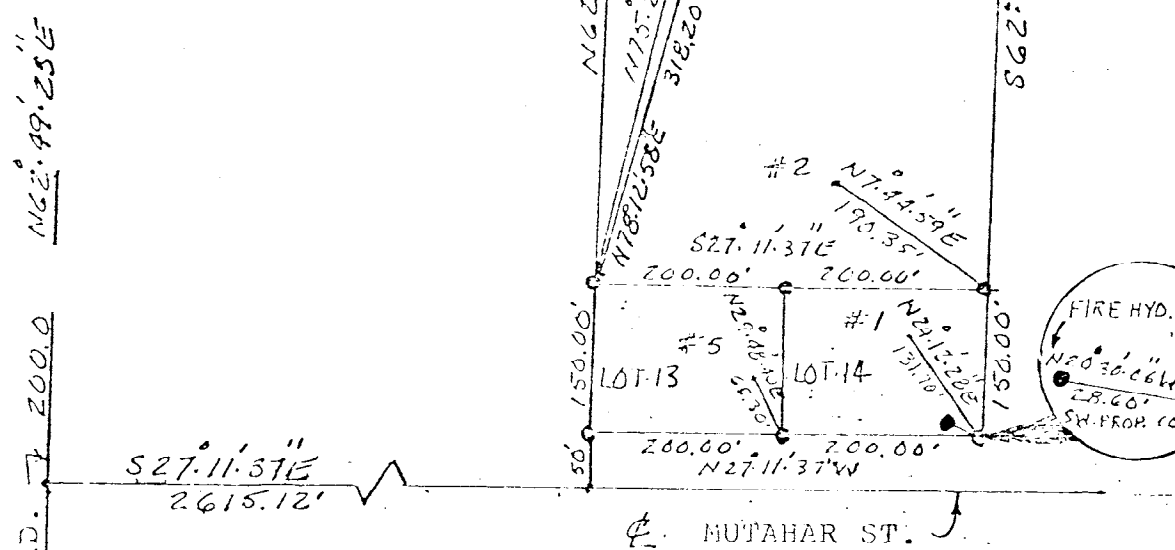
Direction
(blowing from)

PLOT YEAR-DATE-TIME

97 98 99 00 01
January 1 - December 31
Midnight - 11 PM

PROJECT/PLOT NO.

FIGURE 2

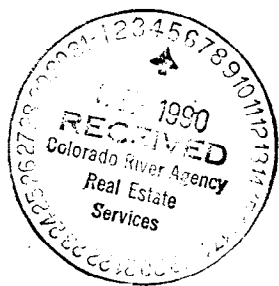


Rebar, 1/2" Diameter,
1 1/2' long, set at
all corner points:

1" = 200 feet

603-119-91

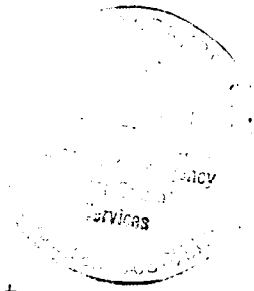
COLORADO RIVER INDUSTRIAL PARK
 BEING PART OF SECTION 7, T9NR19W
 GILA, SALT RIVER BASE MERIDIAN
 LA PAZ COUNTY, ARIZONA
 COLORADO RIVER INDIAN RESERVATION



3.2.90

March 2, 1990

COLORADO RIVER INDUSTRIAL PARK
BEING PART OF SECTION 7, T9N, R19W
G11A, SALT RIVER BASE MERIDIAN
COLORADO RIVER INDIAN RESERVATION



Starting from the intersection point of Mohave Road and Mutabar Street, existing survey monuments, Thence S27°11'.37"E, 2615.12 feet. Thence N62°49'.23"E, 50.00 feet to the Northwest corner Lot 13, and point of beginning. Thence N62°49'.23"E, 150.00 feet, to the Northeast corner Lot 13. Thence S27°11'.37"E, 200.00 feet to the Southeast corner Lot 13. Thence S27°11'.37"E, 200.00 feet to the Southeast corner Lot 14, Thence S62°49'.23"W, 150.00 feet to the Southwest corner Lot 14. Thence N27°11'.37"W, 200.00 feet, along road right away, to the Northwest corner Lot 14. Thence N27°11'.37"W, 200.00 feet, along right away, to point of beginning. The area contains a calculated area of 1.38 acres.

Thence from the Northeast corner Lot 13, N62°49'.23"E, 939.00 feet, to the Northeast corner, 8.62 acre lot. Thence S27°11'.37"E, 400 feet to the Southeast corner, 8.62 acre lot. Thence S62°49'.23"W, 939.00 feet to the Southeast corner, Lot 14. The area contains a calculated area of 8.62 acres.

Thence from the Northeast corner Lot 13, soil sample number 3, bears N75°27'.59"E, 562.95 feet. Soil sample number 6 bears N78°12'.58"E, 318.20 feet.

Thence from the Northeast corner, 8.62 acre lot, soil sample number 4, bears N80°38'.55"W, 239.20 feet.

Thence from the Southeast corner Lot 14, soil sample number 2, bears N7°44'.59"E, 190.35 feet.

Thence from the Southwest corner Lot 14, soil sample number 1, bears N24°12'.28"E, 131.70 feet. Fire hydrant bears N20°30'.06"W, 28.60 feet.

Thence from the Northwest corner Lot 14, soil sample number 5, bears N29°48'.40"E, 65.30 feet.

ENGINEER'S CERTIFICATE: I certify that I have examined this plot of the Survey and found that it conforms with the data from which it was drawn and that I am satisfied the map is technically correct.

Reginald Fisher

603-119-91